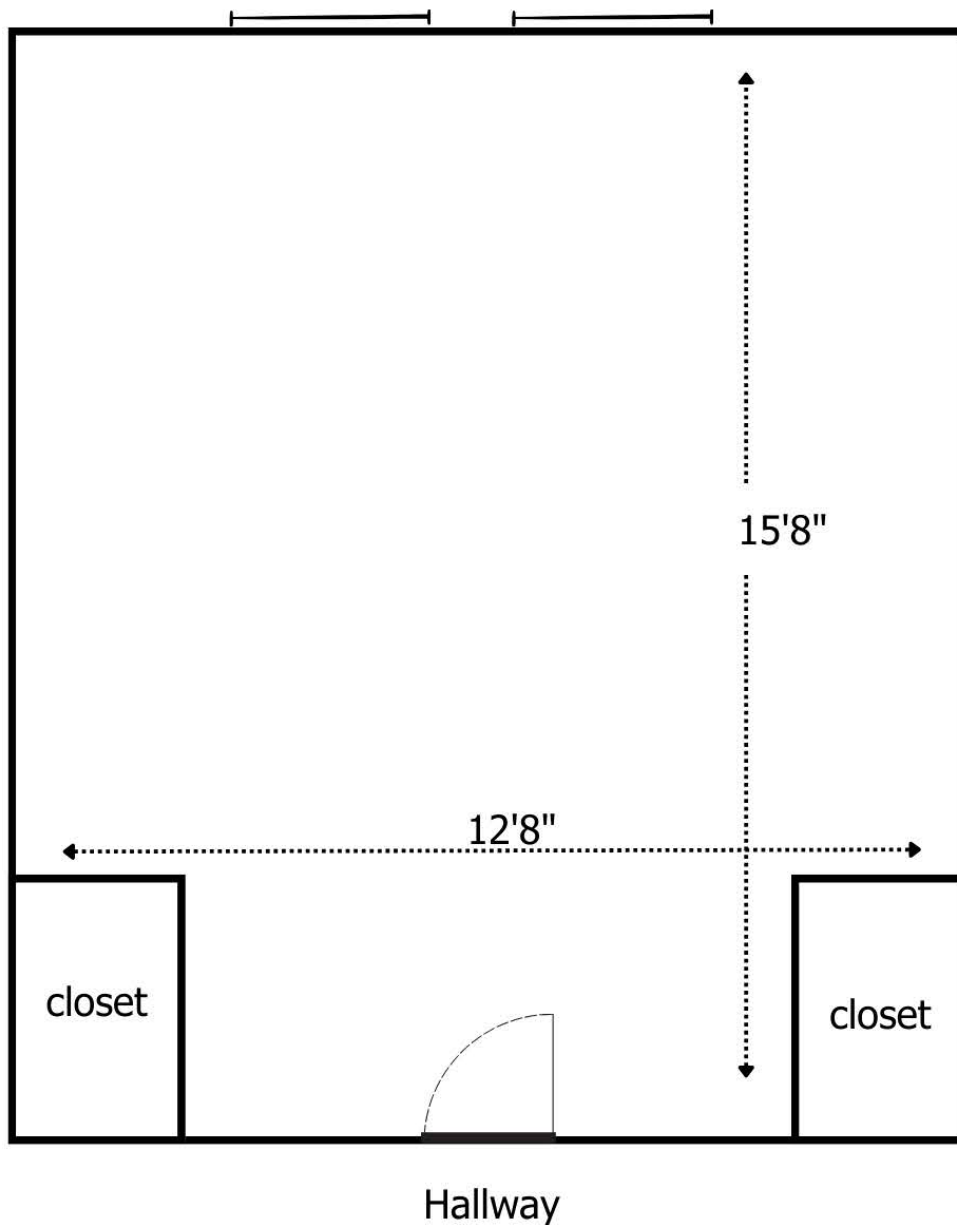


Aston Hall

All rooms - double occupancy

Community restroom (~25)

3 showers, 1 tub, 4 sinks, and 4 toilets



Dimensions: 15'8" deep x 12'8" wide

Closet: 3'3" long x 2' deep

Desktop: 3'6" length x 2' width x 3'9" height

Dresser: 1'6" length x 2'6" width x 3'2" height

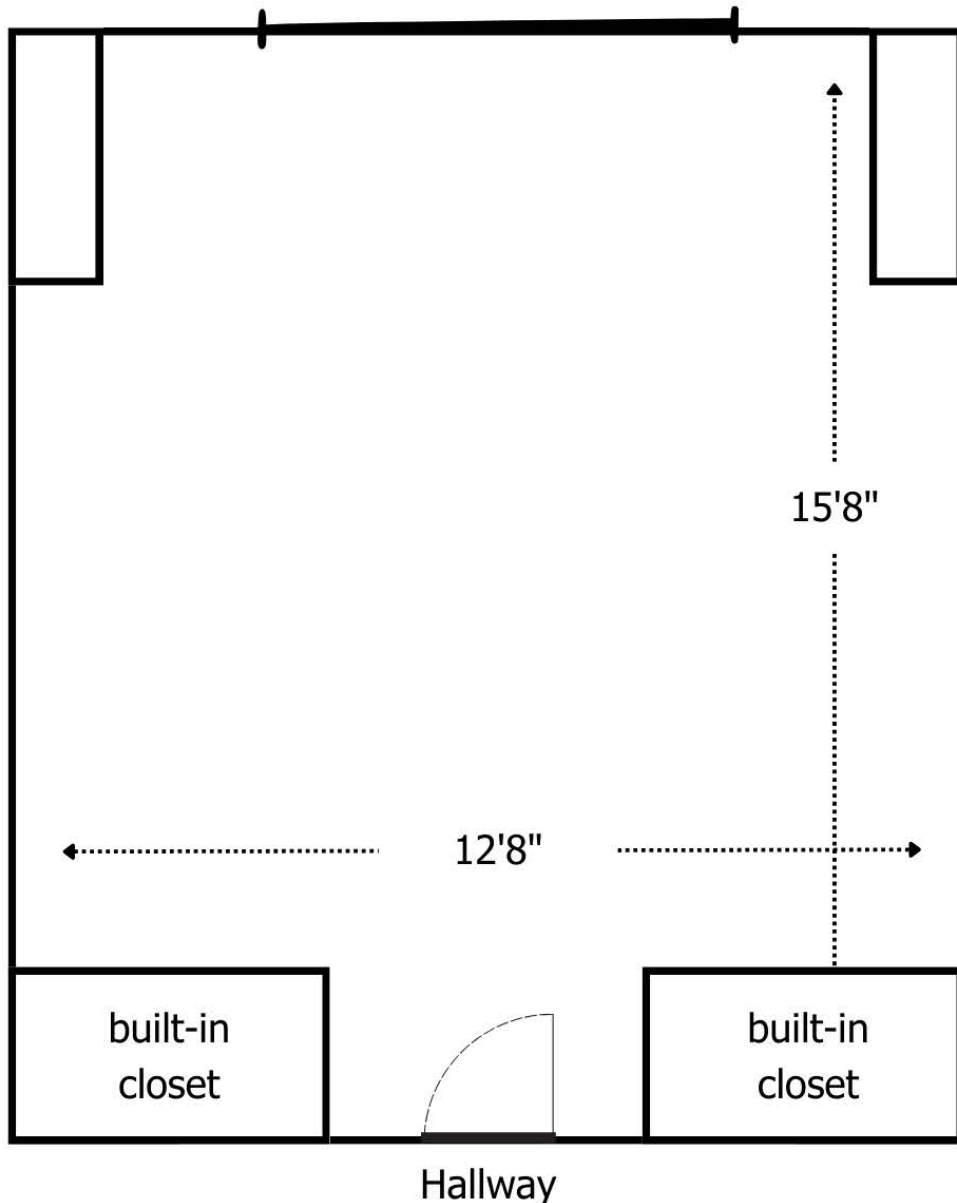
Bed: Twin Extra-Long 88" length (7'4")

Blackburn Hall

All rooms - double occupancy

Community restroom (~30)

3 showers, 1 tub, 5 sinks, and 4 toilets



Dimensions: 15'8" deep x 12'8" wide

Closet: 3'8" long x 3'3" deep Inside, there are two 3'x2' shelves

Desktop: 3'6" length x 2' width x 3'9" height

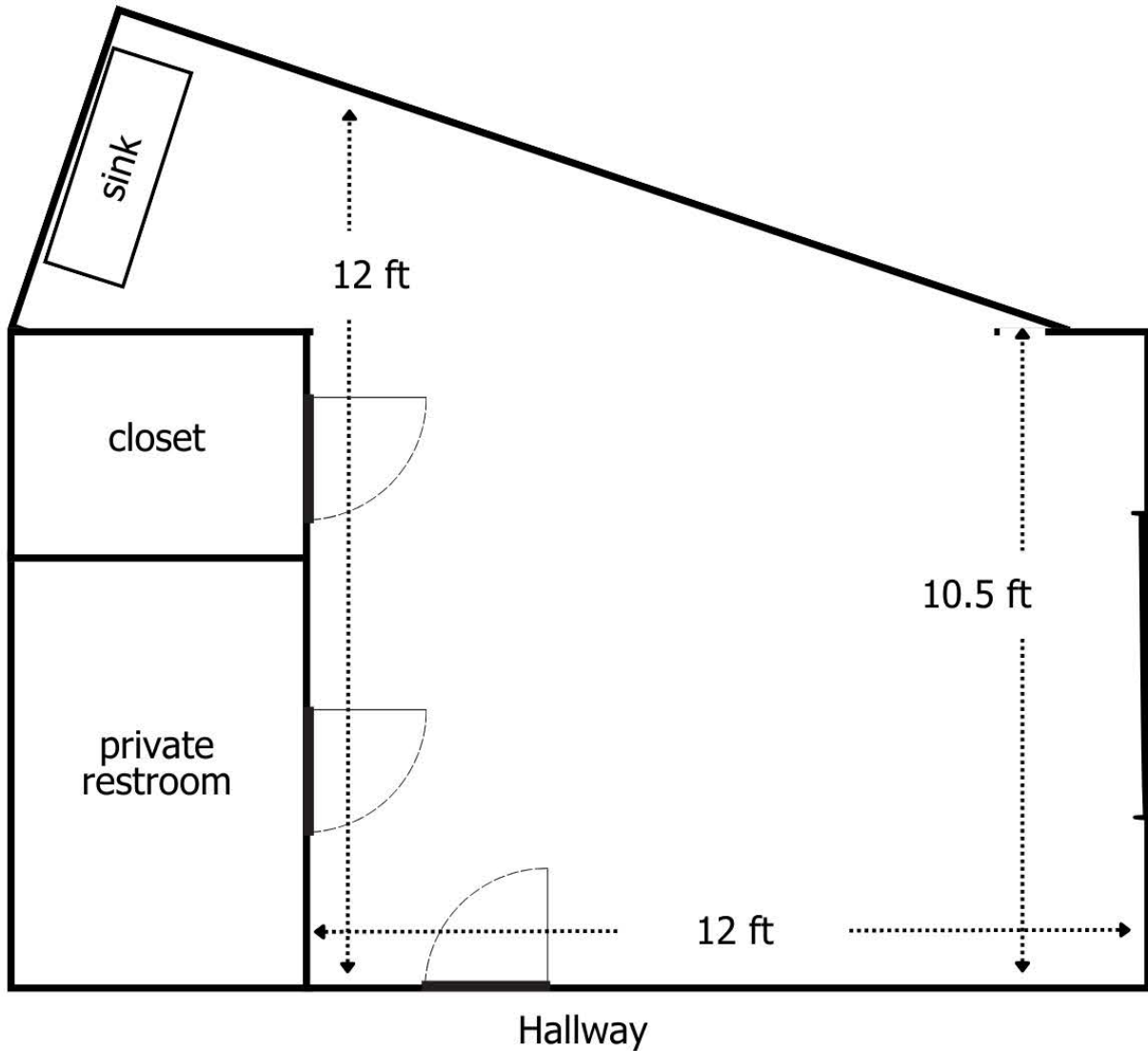
Dresser: 1'6" length x 2'6" width x 3'2" height

Bed: Twin Extra-Long 88" length (7'4")

Dolson Hall

Rooms 107, 207, 307, & 407

Accessible & private restroom



Room Dimensions
L: 10.5 ft
W: 12 ft
Diag. corner to corner: 16 ft

Closet Dimensions
L: 84 in
D: 35 in
Floor to rack H: 51 in
Shelf to ceiling H: 42 in.

Desktop: 3'6" length x 2' width x 3'9" height
Dresser: 1'6" length x 2'6" width x 3'2" height
Bed: Twin Extra-Long 88" length (7'4")

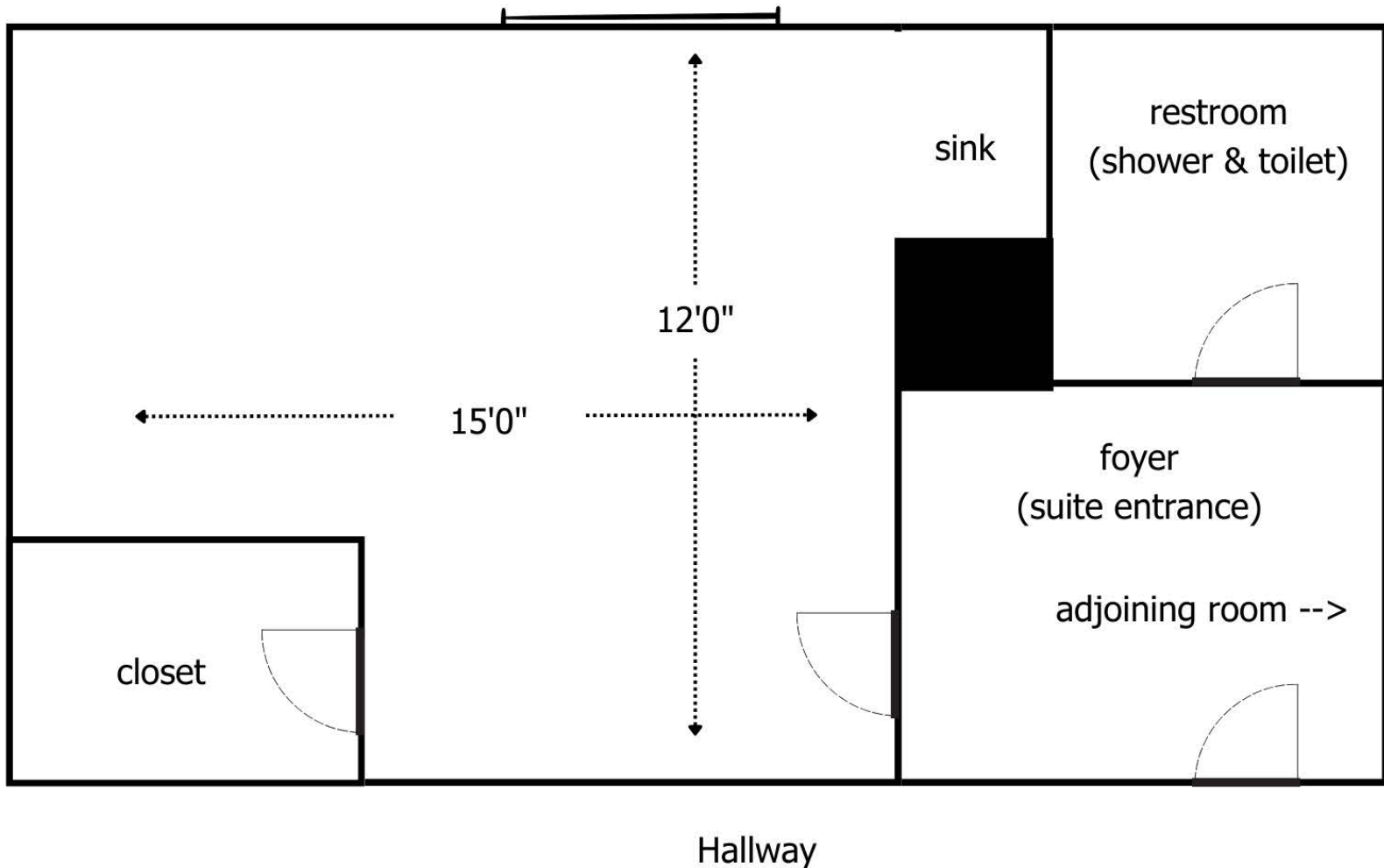
Dolson Hall

Standard double occupancy

Private Suite-Style restroom

Restroom & Rooms are behind a suite door

Shares suite with a double or single room



Dimensions: deep x wide
Closet: 10' deep x 5'7" wide x 7'9" height (has shelf)
Desktop: 3'6" length x 2' width x 3'9" height
Dresser: 1'6" length x 2'6" width x 3'2" height
Bed: Twin Extra-Long 88" length (7'4")

Dolson Hall

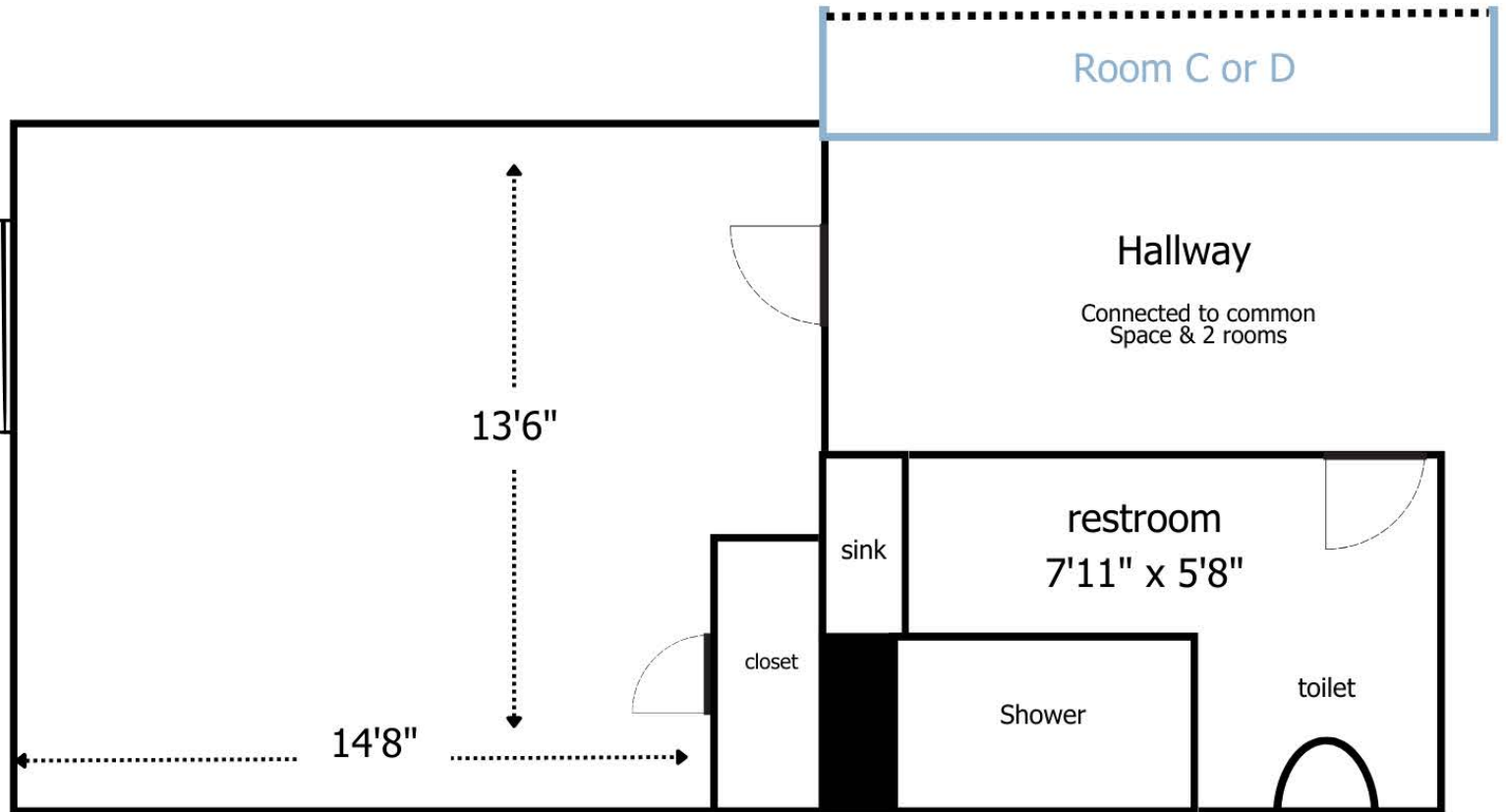
Quad occupancy (4 singles)

2 private Suite-Style restrooms

Attached with common space; priced as single room

Quad Rooms A or B

Represents one side of a quad living space



Dimensions: 14'6" deep x 13'6" wide

Closet: 1'7" deep x 4" wide x 7'9" height (has shelf)

Desktop: 3'6" length x 2' width x 3'9" height

Dresser: 1'6" length x 2'6" width x 3'2" height

Bed: Twin Extra-Long 88" length (7'4")

Dolson Hall

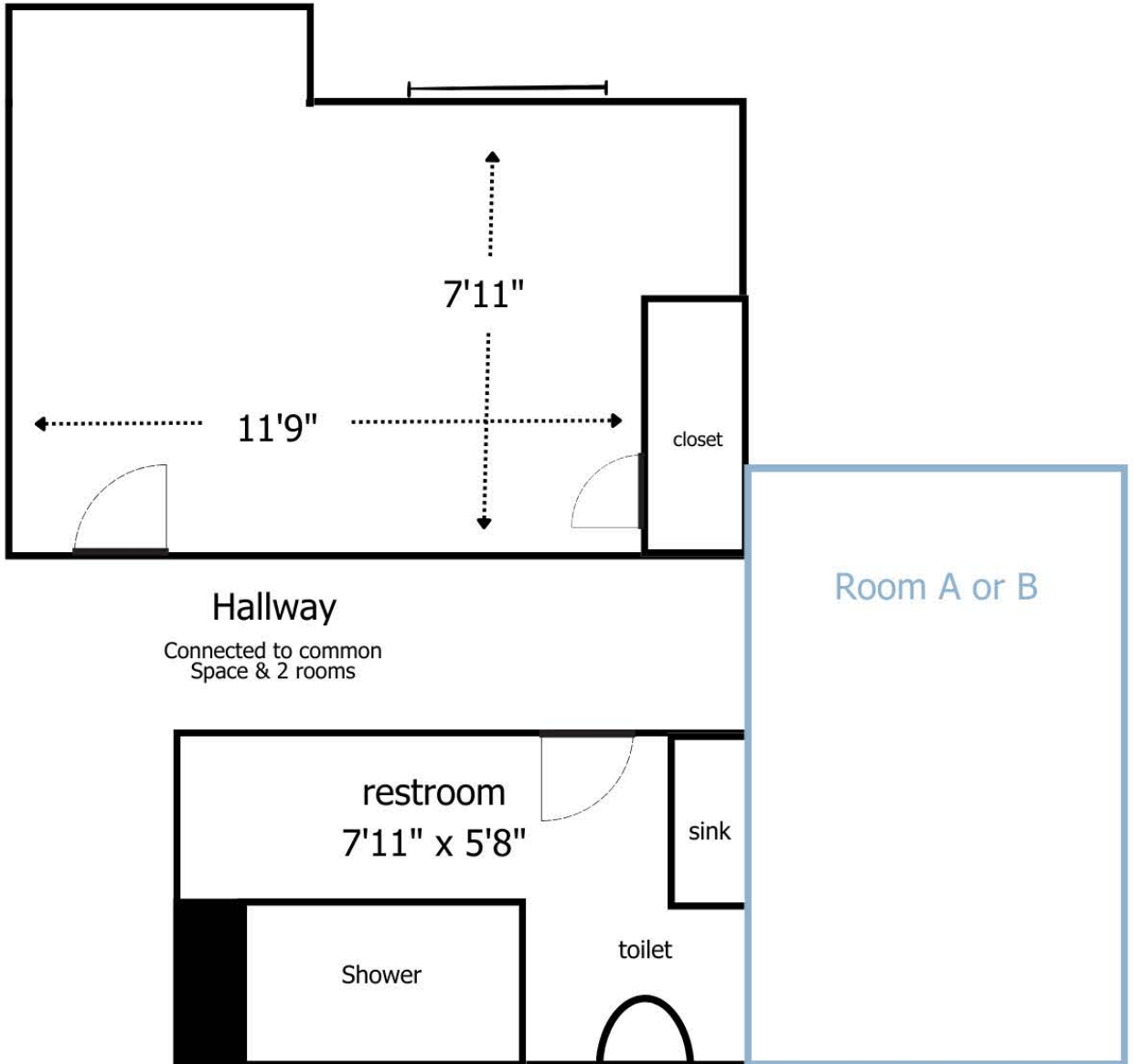
Quad occupancy (4 singles)

2 private Suite-Style restrooms

Attached with common space; priced as single room

Quad Rooms C or D

Represents one side of a quad living space



Hallway

Connected to common
Space & 2 rooms

restroom
7'11" x 5'8"

sink

Shower

toilet

Room A or B

Dimensions: 14'6" deep x 13'6" wide

Closet: 1'7" deep x 4" wide x 7'9" height (has shelf)

Desktop: 3'6" length x 2' width x 3'9" height

Dresser: 1'6" length x 2'6" width x 3'2" height

Bed: Twin Extra-Long 88" length (7'4")

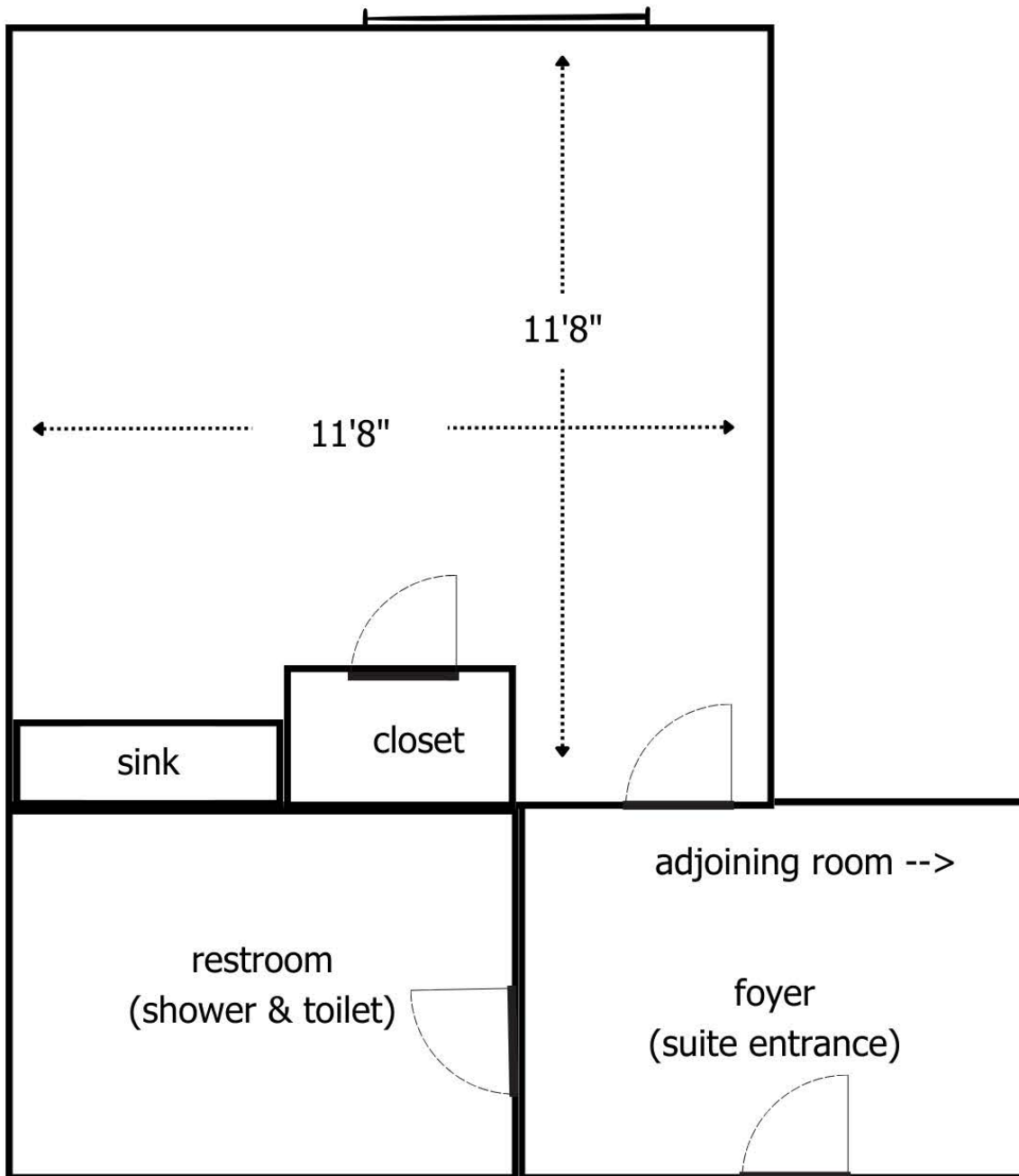
Dolson Hall

Standard single occupancy

Private Suite-Style restroom

Restroom & Rooms are behind a suite door

Shares suite with a double room



Hallway

Dimensions: 11'7" deep x 11'8" wide

Closet: 4' deep x 1'9" wide x 7'9" height (has shelf)

Desktop: 3'6" length x 2' width x 3'9" height

Dresser: 1'6" length x 2'6" width x 3'2" height

Bed: Twin Extra-Long 88" length (7'4")

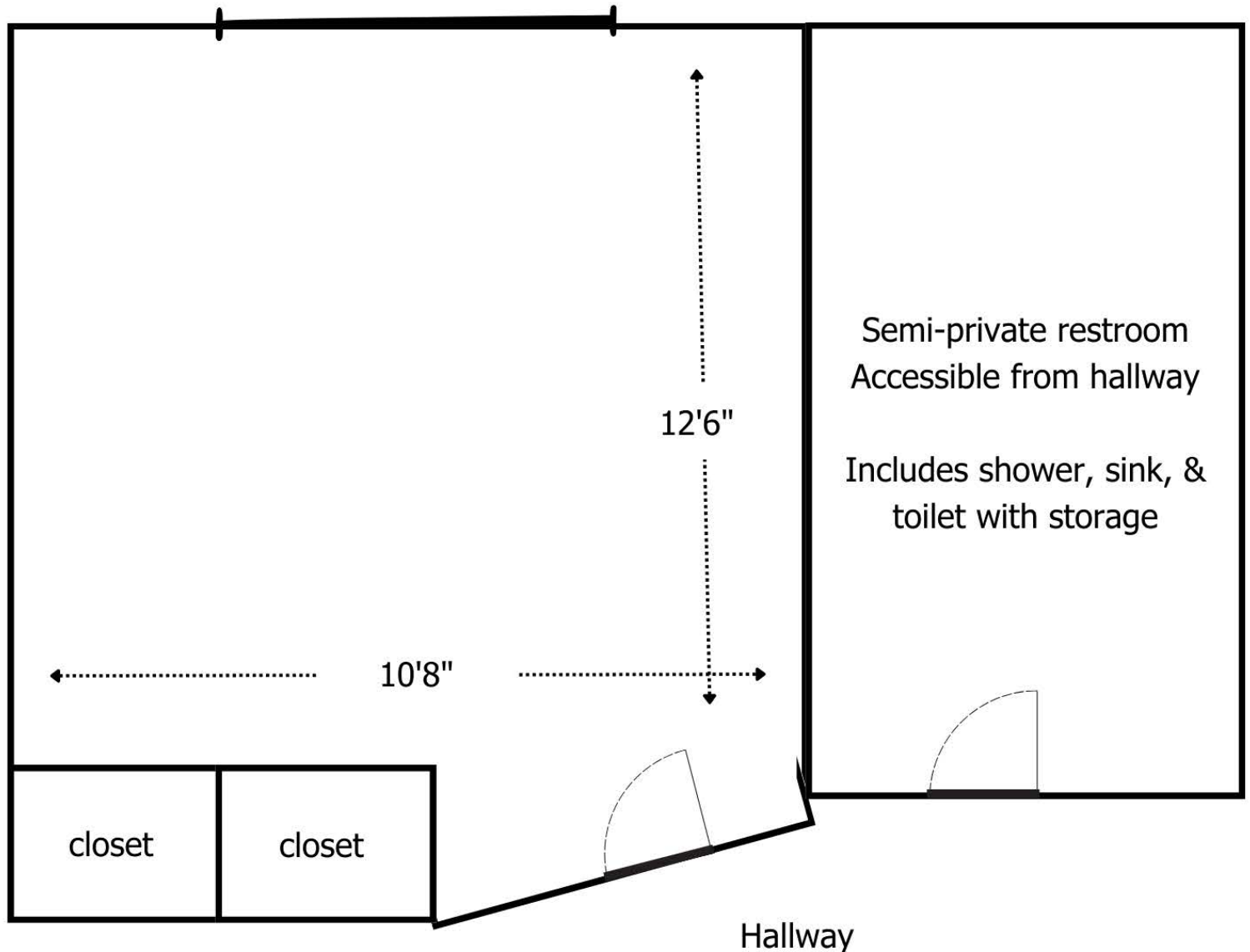
New Hall 4 & Weck Hall

All rooms - double occupancy

Semi-private suite-style restroom

Hallway access to restroom between suite doors

Shares suite with a double room



Dimensions: 12'6" deep x 10'8" wide

Closet: 3'3" long x 2' deep

Desktop: 3'6" length x 2' width x 3'9" height

Dresser: 1'6" length x 2'6" width x 3'2" height

Bed: Twin Extra-Long 88" length (7'4")