

Shilling Hall

Main Level

EMERGENCY ACTION PLAN

IN THE EVENT OF AN EMERGENCY OCCUPANTS MAY BE ALERTED BY:

ALARM DEVICES

Fire: Audible Alarm

Tornado: EMA Warning Siren

IN PERSON *By Security or Law Enforcement personnel*

Fire: Upon discovery by personnel or passerby

Tornado: Upon sighting by personnel or passerby

CRISIS COMMUNICATION

FROM MILLIKIN PUBLIC SAFETY VIA:

- » MU Alert
- » Campus Broadcast Message
- » Email Alert
- » Verbal Message from MUPS Staff

THE POLICY OF THIS ESTABLISHMENT IN THE EVENT OF FIRE OR OTHER EMERGENCY IS:

- » **Fire:** Evacuate immediately
- » **Tornado:** Seek shelter in lowest level center area away from windows and men's restroom area this level.
- » **Campus Emergency:** Follow instructions given in crisis communication to mitigate hazards.

Instructions may include a "lock down" and/or shelter in place instruction. For this space a "lock down" may be implemented by building or security staff securing the exterior doors. Further sheltering into lockable classrooms, offices, or other spaces may be preferred.

EVACUATION

Occupants shall evacuate by means of the nearest available marked exit.

FIRE

Any individual who has been trained in the use of portable fire extinguishers may attempt to extinguish fires before evacuating as long as 911 has been contacted and advised of the emergency.

Critical operations shutdown procedures are not required in this building, all employees are expected to immediately evacuate or take other emergency precautions.

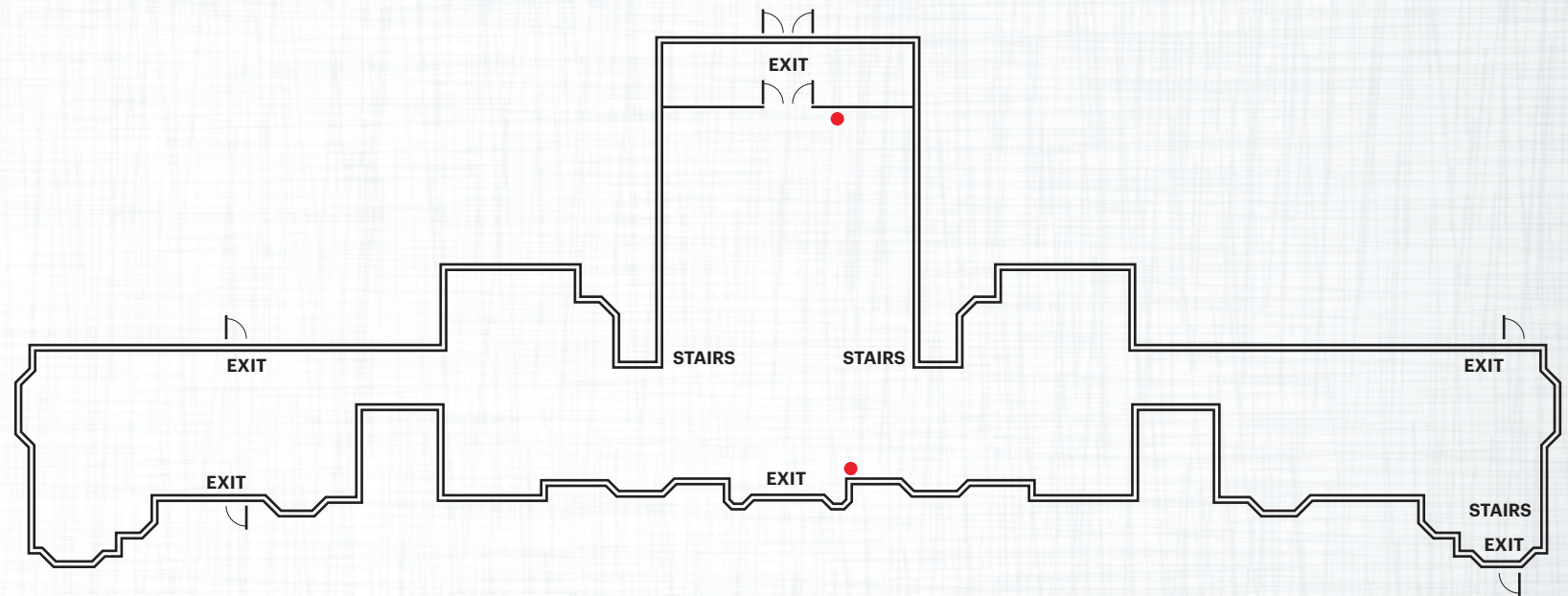
No employees are assigned to perform medical or rescue duties during emergency evacuation situations.

AFTER AN EMERGENCY EVACUATION

Occupants are to gather in the following location(s): Miller Quad located just north of Shilling Hall.

The procedure for accounting for all employees is: Lead staff member present.

Automated External Defibrillator (AED)
Shilling Hall (Second floor beside the elevator.)



● Fire Extinguishers

Shilling Hall

Second Level

EMERGENCY ACTION PLAN

Automated External Defibrillator (AED)
Shilling Hall (Second floor beside the elevator.)

IN THE EVENT OF AN EMERGENCY OCCUPANTS MAY BE ALERTED BY:

ALARM DEVICES

Fire: Audible Alarm

Tornado: EMA Warning Siren

IN PERSON *By Security or Law Enforcement personnel*

Fire: Upon discovery by personnel or passerby

Tornado: Upon sighting by personnel or passerby

CRISIS COMMUNICATION

FROM MILLIKIN PUBLIC SAFETY VIA:

- » MU Alert
- » Campus Broadcast Message
- » Email Alert
- » Verbal Message from MUPS Staff

THE POLICY OF THIS ESTABLISHMENT IN THE EVENT OF FIRE OR OTHER EMERGENCY IS:

- » **Fire:** Evacuate immediately
- » **Tornado:** Seek shelter in lowest level center area away from windows and men's restroom area this level.
- » **Campus Emergency:** Follow instructions given in crisis communication to mitigate hazards.

*Instructions may include a "lock down" and/or shelter in place instruction.
For this space a "lock down" may be implemented by building or security staff securing the exterior doors. Further sheltering into lockable classrooms, offices, or other spaces may be preferred.*

EVACUATION

Occupants shall evacuate by means of the nearest available marked exit.

FIRE

Any individual who has been trained in the use of portable fire extinguishers may attempt to extinguish fires before evacuating as long as 911 has been contacted and advised of the emergency.

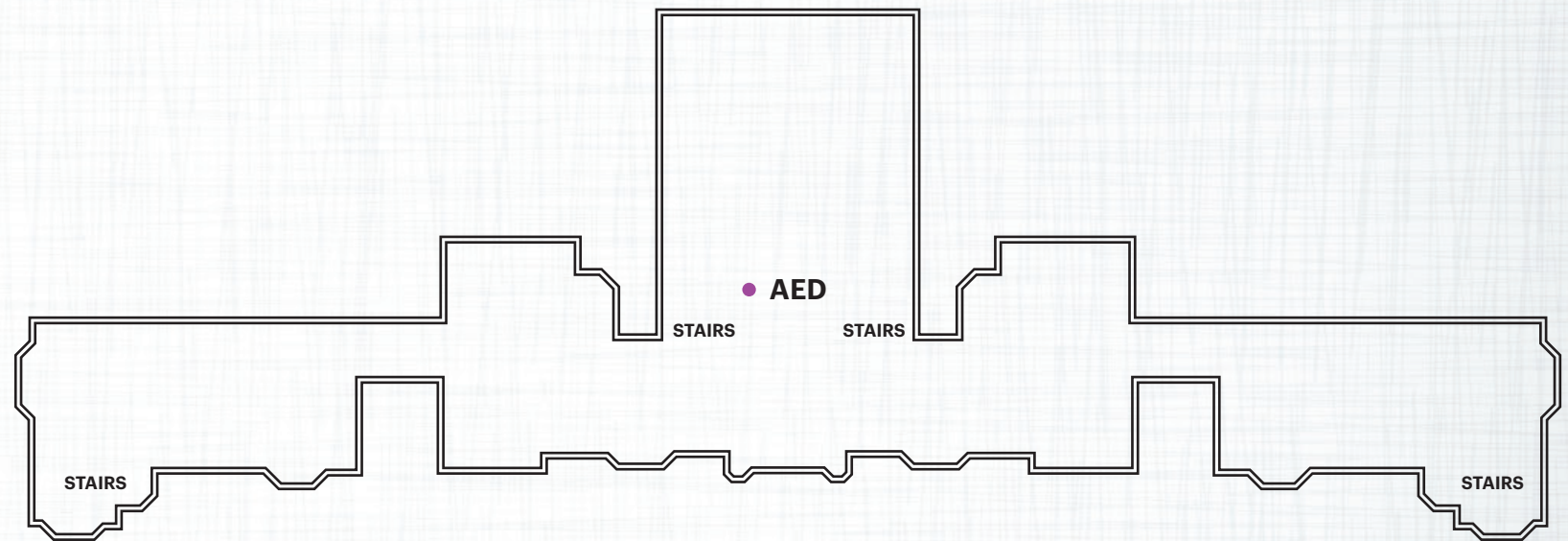
Critical operations shutdown procedures are not required in this building, all employees are expected to immediately evacuate or take other emergency precautions.

No employees are assigned to perform medical or rescue duties during emergency evacuation situations.

AFTER AN EMERGENCY EVACUATION

Occupants are to gather in the following location(s): Miller Quad located just north of Shilling Hall.

The procedure for accounting for all employees is: Lead staff member present.



Shilling Hall

Third Level

EMERGENCY ACTION PLAN

IN THE EVENT OF AN EMERGENCY OCCUPANTS MAY BE ALERTED BY:

ALARM DEVICES

Fire: Audible Alarm

Tornado: EMA Warning Siren

IN PERSON *By Security or Law Enforcement personnel*

Fire: Upon discovery by personnel or passerby

Tornado: Upon sighting by personnel or passerby

CRISIS COMMUNICATION

FROM MILLIKIN PUBLIC SAFETY VIA:

- » MU Alert
- » Campus Broadcast Message
- » Email Alert
- » Verbal Message from MUPS Staff

THE POLICY OF THIS ESTABLISHMENT IN THE EVENT OF FIRE OR OTHER EMERGENCY IS:

- » **Fire:** Evacuate immediately
- » **Tornado:** Seek shelter in lowest level center area away from windows and men's restroom area this level.
- » **Campus Emergency:** Follow instructions given in crisis communication to mitigate hazards.

Instructions may include a "lock down" and/or shelter in place instruction. For this space a "lock down" may be implemented by building or security staff securing the exterior doors. Further sheltering into lockable classrooms, offices, or other spaces may be preferred.

EVACUATION

Occupants shall evacuate by means of the nearest available marked exit.

FIRE

Any individual who has been trained in the use of portable fire extinguishers may attempt to extinguish fires before evacuating as long as 911 has been contacted and advised of the emergency.

Critical operations shutdown procedures are not required in this building, all employees are expected to immediately evacuate or take other emergency precautions.

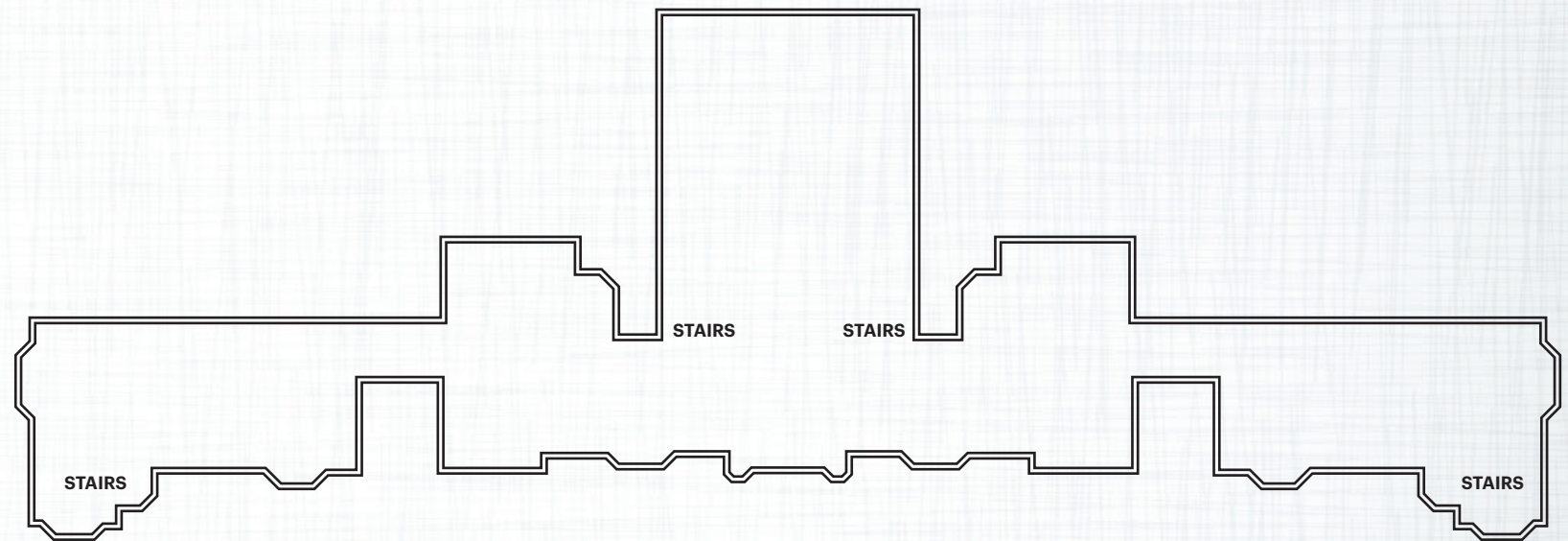
No employees are assigned to perform medical or rescue duties during emergency evacuation situations.

AFTER AN EMERGENCY EVACUATION

Occupants are to gather in the following location(s): Miller Quad located just north of Shilling Hall.

The procedure for accounting for all employees is: Lead staff member present.

Automated External Defibrillator (AED)
Shilling Hall (Second floor beside the elevator.)



Shilling Hall

Fourth Level

EMERGENCY ACTION PLAN

IN THE EVENT OF AN EMERGENCY OCCUPANTS MAY BE ALERTED BY:

ALARM DEVICES

Fire: Audible Alarm

Tornado: EMA Warning Siren

IN PERSON *By Security or Law Enforcement personnel*

Fire: Upon discovery by personnel or passerby

Tornado: Upon sighting by personnel or passerby

CRISIS COMMUNICATION

FROM MILLIKIN PUBLIC SAFETY VIA:

» MU Alert

» Email Alert

» Campus Broadcast Message

» Verbal Message from MUPS Staff

THE POLICY OF THIS ESTABLISHMENT IN THE EVENT OF FIRE OR OTHER EMERGENCY IS:

» **Fire:** Evacuate immediately

» **Tornado:** Seek shelter in lowest level center area away from windows and men's restroom area this level.

» **Campus Emergency:** Follow instructions given in crisis communication to mitigate hazards.

Instructions may include a "lock down" and/or shelter in place instruction.

For this space a "lock down" may be implemented by building or security staff securing the exterior doors. Further sheltering into lockable classrooms, offices, or other spaces may be preferred.

EVACUATION

Occupants shall evacuate by means of the nearest available marked exit.

FIRE

Any individual who has been trained in the use of portable fire extinguishers may attempt to extinguish fires before evacuating as long as 911 has been contacted and advised of the emergency.

Critical operations shutdown procedures are not required in this building, all employees are expected to immediately evacuate or take other emergency precautions.

No employees are assigned to perform medical or rescue duties during emergency evacuation situations.

AFTER AN EMERGENCY EVACUATION

Occupants are to gather in the following location(s): Miller Quad located just north of Shilling Hall.

The procedure for accounting for all employees is: Lead staff member present.

Automated External Defibrillator (AED)
Shilling Hall (Second floor beside the elevator.)

