

MILLIKIN UNIVERSITY® DECATUR, ILLINOIS U.S.A.

MILLIKIN



INTERNATIONAL EDUCATION

millikin.edu/international



MILLIKIN UNIVERSITY

- » **Founded:** 1901
- » **Campus Size:** 75 acres
- » **Student Body:** 2,000 students, including approximately 100 graduate students
- » **Faculty:** 141 full-time, 81% with terminal degree
- » **Academic Calendar:**
 - Fall Semester:** August - December
 - Winter Courses:** January
 - Spring Semester:** January - May
 - Summer Courses:** June - August
- » **Careers:** 99% of grads found employment or entered graduate school within six months of graduation.

RANKINGS & ACCREDITATIONS

- » **Accreditation:** Higher Learning Commission of the North Central Association; National Association of Schools of Music (NASM); Commission on Collegiate Nursing Education (CCNE); Council on Accreditation of Nurse Anesthesia Educational Programs (COA); Commission on Accreditation of Athletic Training Education (CAATE); Accreditation Council for Business Schools and Programs (ACBSP); National Council for Accreditation of Teacher Education (NCATE).
- » **Rankings:** Millikin University proudly claims several regional and national rankings: No. 10 Regional College in the Midwest according to U.S. News & World Report's 2016 "Best Colleges" guidebook; among the nation's best colleges and universities by Forbes magazine in its 2016 list of "America's Top Colleges"; one of the Midwest's best colleges in The Princeton Review's 2016 College Selection Guide.
- » **Performance Learning:** Nationally and internationally recognized for Performance Learning, our unique approach to transforming quality education into student success.

BIG BLUE ATHLETICS

MEN'S SPORTS

- » Baseball JV/Varsity
- » Basketball JV/Varsity
- » Cross Country
- » Football JV/Varsity
- » Golf
- » Soccer JV/Varsity
- » Swimming
- » Tennis
- » Track & Field (Indoor)
- » Track & Field (Outdoor)
- » Wrestling

WOMEN'S SPORTS

- » Basketball JV/Varsity
- » Cross Country
- » Golf
- » Soccer
- » Softball JV/Varsity
- » Swimming
- » Tennis
- » Track & Field (Indoor)
- » Track & Field (Outdoor)
- » Volleyball JV/Varsity

INTRAMURALS

- » Basketball
- » Dodgeball
- » Flag Football
- » Soccer
- » Softball
- » Ultimate Frisbee
- » Volleyball

OTHER SPORTS

- » Cheerleading
- » Dance Team

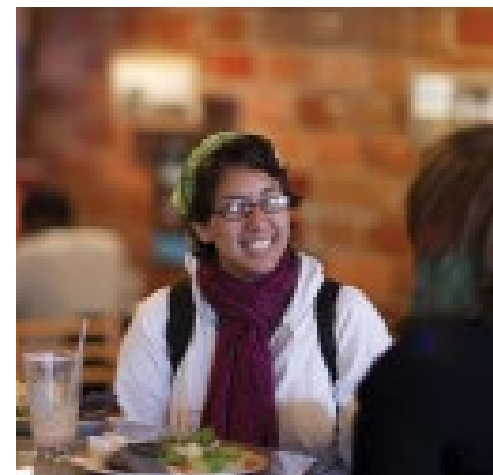
INTERNATIONAL STUDENTS

- » **International Community:** 55 international students from 28 countries
- » **Diverse Student Body:** Our international students come from a wide range of countries.

Afghanistan • Australia • Austria • Belgium • Canada • China
El Salvador • France • India • Ireland • Japan • Mexico • Nepal
Netherlands • Pakistan • Panama • South Korea • Rwanda
Saudi Arabia • Spain • Taiwan • Tajikistan • Tunisia
United Kingdom • Venezuela • Vietnam • Zaire • Zimbabwe

DECATUR, ILLINOIS U.S.A.

- » **74,000-person city**, featuring an impressive quality of life and access to entertainment and cultural life.
- » **Strong international business climate** with high profile international companies, including Caterpillar Inc. (CAT), Tate & Lyle (TATYY), Archer Daniels Midland (ADM), and Fuyao Glass Industry Group.
- » **Easy access to Chicago** (3 hours), **Saint Louis** (2 hours), and **Indianapolis** (2.5 hours) without paying the high price of living there. The Decatur airport features inexpensive fare to Chicago or St. Louis daily.
- » **Millikin is located in a residential neighborhood** within walking distance to entertainment and dining options.



APPLY

Millikin.edu/apply
commonapp.org

ACADEMIC CALENDAR

Fall Semester: August - December

Winter Courses: January

Spring Semester: January - May

Summer Courses: June - August

COSTS 2016-2017

Undergraduate Tuition:

\$31,032 USD (Academic Year)

\$1,038 USD/Credit hour (Winter & Summer Courses)

Room & Board: \$11,200 (August - May)

Winter & Summer Housing Available

Fees: up to \$810 USD/semester

CRITERIA

Academic Transcripts

Personal Statement

Letters of Recommendation (2)

Certification of Finances

Passport

ACT/SAT (optional)

ENGLISH PROFICIENCY

Direct Admission

6.0 IELTS

540 TOEFL (PBT)

76 TOEFL (iBT)

51 PTE(A)

Conditional Admission

5.5 IELTS

500 TOEFL (PBT)

61 TOEFL (iBT)

43 PTE(A)

UNDERGRADUATE PROGRAMS

MAJORS

Accounting

Art

Art Therapy

Arts Technology

Audio Engineering & Production,

Live Entertainment, Visual

Athletic Training

Biology

Allied Health, Molecular/Cell Biology,

Traditional

Biology Education

Business Management

Chemistry

Biochemistry, Business, Research

Chemistry Education

Commercial Music

Communication

Mass Media/Journalism,

Organizational Communication,

Public Relations

Digital Media Marketing

Early Childhood Developmental Therapy

Early Childhood Education

Elementary Education

English

Literature, Writing

English Education

Entrepreneurship

Environmental Studies

Exploratory Studies (Undecided)

Graphic Design

Health, Fitness & Recreation

History

Human Services

Information Systems

Interdepartmental

International Business

Instructional Development

Mathematics

Actuarial Science

Mathematics Education

Music

Music Business

Music Education

Instrumental, Vocal

Music Performance

Instrumental, Piano, Vocal

Musical Theatre

Nursing

Philosophy

Physical Education

Physics

Political Science

Psychology

Social Science Education

Sociology

Spanish

Spanish Education

Sport Management

Studio Art

Theatre

Acting, Administration,

Design & Production,

Stage Management

DUAL-DEGREE (3+2) PROGRAMS*

Biomedical Engineering

Chemical Engineering

Civil Engineering

Computer Engineering

Computer Science

Electrical Engineering

Mechanical Engineering

PRE-PROFESSIONAL PROGRAMS

Pre-Chiropractic

Pre-Dentistry

Pre-Engineering

Pre-Law

Pre-Medical Technology

Pre-Medicine

Pre-Occupational Therapy

Pre-Optometry

Pre-Pharmacy

Pre-Physical Therapy

Pre-Physician Assistant

Pre-Veterinary Medicine

ENGLISH LANGUAGE PROGRAMS

Our English Language Center offers customized programs for learning English in a setting that will meet your personal needs and goals.

ENGLISH TRANSITION PROGRAM

Improve your written and spoken English communication skills while taking courses to earn a bachelor's degree.

» **Be conditionally admitted and earn college credits while improving language skills.**

» **Earn a bachelor's degree from our selection of more than 50 majors.**

» **Two program levels available based on existing language skills: intermediate or high intermediate.**

INTENSIVE ENGLISH PROGRAM

Learn English and enjoy our American campus experience. Use Millikin as a home-base to explore the Midwestern U.S.A.

» **Placement test completed upon your arrival.**

» **No academic qualification or English language test required for admission.**

» **Simple application with an admission decision made within 72 hours.**

» **Four program levels available based on existing language skills: beginning to high intermediate.**

APPLY

Millikin.edu/apply

ACADEMIC CALENDAR

Fall Semester: August - December

Spring Semester: January - May

Winter & Summer Custom Programs Available

COSTS 2016-2017

English Transition Program/

Conditional Admission:

\$31,032 USD (Academic Year)

\$1,038 USD/Credit hour (Winter & Summer Courses)

Intensive English Program:

\$4,760 USD/Semester

Room & Board: \$11,200 (August - May)

Winter & Summer Housing Available

Fees: up to \$810 USD/semester

CRITERIA

English Transition Program

Academic Transcripts

Personal Statement

Letters of Recommendation (2)

Certification of Finances

Passport

ACT/SAT (optional)

Intensive English Program

Academic Transcripts

Certification of Finances

Passport

ENGLISH PROFICIENCY

English Transition Program/

Conditional Admission

5.5 IELTS

500 TOEFL (PBT)

61 TOEFL (iBT)

43 PTE(A)

Intensive English Program

No Testing Required

** Students receive a Millikin degree in Biology, Chemistry, Mathematics, or Physics and are awarded a second degree from Washington University or University of Missouri-Kansas City.*



ADMISSION

www.Millikin.edu/apply

ACADEMIC CALENDAR

MBA Program: August - August

MENP Program: 3 Year Program

COSTS 2016-2017

MBA Program: \$30,000

MENP Program: \$64,408

Fees: up to \$810/sem

On Campus Housing Available

CRITERIA

Academic Transcripts

Personal Statement

Letters of Recommendation (3)

Certification of Finances

Passport

Resumè

GRE/GMAT

ENGLISH PROFICIENCY

Graduate Admission

6.5 IELTS

550 TOEFL (PBT)

79 TOEFL (iBT)

56 PTE(A)

MASTER OF BUSINESS ADMINISTRATION

Fast-Track MBA

Our Fast-Track MBA provides a unique experience tailored to the diverse needs of today's ambitious business professionals. It's the perfect fit for recent college graduates seeking to expand their professional business skills and networks.

- » **One-year program**
- » **Starts in August**
- » **Full-time, day classes**
- » **Work in small cohorts taught by C-suite faculty**
- » **Work with a fortune 100 company to earn internal Green Belt Lean Management Certification**

Executive MBA

Students in the Executive MBA typically have several years of business experience and come from a variety of educational backgrounds. They've worked in small or corporate businesses in fields such as accounting, health care, engineering, information systems, human resources, manufacturing, and entrepreneurship.

- » **17-month program**
- » **Starts in January**
- » **Part-time, evening classes**
- » **Work in small cohorts taught by C-suite faculty**
- » **International travel included**

MBA "Boot Camp": Both programs kick off with a review of basic business fundamentals during an experience fondly referred to as MBA Boot Camp. Faculty cover critical business topics and concepts to prepare students of every background for success after the completion of their degree.

High-Tech Learning Environment: Students have access to a dedicated MBA suite that features videoconferencing and presentation recording capabilities used for both local and remote instruction.

Graduate Assistantship Opportunities: Fast-Track MBA graduate assistantships that include a 50% tuition waiver are available to a select group of high-achieving students.

MASTER OF SCIENCE IN NURSING

Master's Entry into Nursing Practice (MENP)

The MENP track is for students who already hold a non-nursing bachelor's degree and are interested in entering the nursing field. Successful students are conferred an MSN degree upon graduation and can sit for the registered nurse licensure exam (NCLEX-RN) as well as the Nurse Educator Certification exam.

- » **30-month, part-time program**
- » **Intensive, fast-paced curriculum**
- » **Faculty with 15+ years of experience**
- » **Clinical experiences at local hospitals**

ONE-YEAR CERTIFICATES

The following academic certificates can be completed in one year at Millikin University.

Arts Entrepreneurship

Students who complete this certificate want the opportunity to understand entrepreneurship and be able to create and launch a business. This certificate is also suitable to community artists who would like to have the same experience.

Criminal Justice

Learn how to identify and understand the primary agents of the U.S. criminal justice system, and to critically evaluate criminal justice programs and policies.

Digital Media Marketing*

Acquire the skills to write and post blogs, create press releases, track metrics, and maintain business digital media platforms like LinkedIn, Facebook, Twitter, YouTube, Pinterest, and Instagram.

ESL/Bilingual

Students who complete this certificate are interested in addressing the linguistic and cultural needs of English language learners (ELLs). These courses prepare students to develop culturally responsive interactions in diverse settings.

Literacy

Students who complete this certificate will focus on children's ability to read and write but also relate to other forms of literacy such as visual literacy, digital literacy, media literacy, and cultural literacy. Students may choose one of two track: Emergent Literacy or Intermediate/Adolescent Literacy.

Multicultural Leadership

Explore definitions of culture and diversity, and examine approaches to multiculturalism in today's global society.

Organizational Leadership

Become a more effective organizational member, whether your chosen career is in business, non-profits, arts, agriculture, service, sales, or government. Learn how to possess strong leadership, communications, team building, and ethical decision-making skills, and achieve a greater understanding of organization behavior.

Project Management

Students who complete this certificate will be prepared to lead projects and will meet the requirements to take the CAPM exam.

Special Education

Learn about the characteristics common to types of disabilities, the psychological and practical impact that having a disability has on an individual and their family, and the most effective strategies for working with individuals with disabilities.

*Requires student to take Principles of Marketing as a prerequisite course.

SCHOLARSHIPS

These scholarships are available to undergraduate international students seeking full-time enrollment at Millikin University

Millikin International Merit Scholarship

Students whose admission application and academic profile demonstrate a significant potential for contributing to campus life will be granted an International Merit Scholarship. These scholarships are renewable for four years.

Amount: Up to \$20,000/yr.

Presidential Scholarship

The Presidential Scholarship is a prestigious, full-tuition scholarship, renewable for four years. This award is for the best of the best. Presidential Scholars are leaders in Millikin's Honors Program.

Amount: Full-tuition

College of Fine Arts Awards in Art, Music, or Theatre & Dance

For students who pursuing studies in art, music, or theatre & dance and who show significant promise of contribution in the arts. Awards are determined after completion of an audition, interview, or portfolio review.

Amount: \$1,000-\$5,000/yr.

Long-Vanderburg Scholars Program

The Long-Vanderburg Scholars Program is for high-achieving students who show a strong commitment to diversity, cultural identity, leadership, and community service.

Amount: \$2,000/yr. + \$5,000 travel grant opportunity

Leighty Science Scholars Program

The Leighty Science Scholars Program is designated for high-achieving Biology, Chemistry, or Physics majors and includes graduate-level research opportunities and a summer stipend.

Amount: \$2,500/yr. + \$3,000 summer research grant

Sly Scholarship

The Thomas S. Sly Scholarship is an annual endowed scholarship award for freshmen exploratory studies students who are exploring all the possibilities and have not yet declared a major.

Amount: Varies



HOUSING & DINING

THE **woods**
at Millikin

International students are guaranteed on-campus housing and integrated into the greater Millikin University community.

RESIDENCE HALLS

First-year students are assigned to rooms in one of Millikin's newly renovated and furnished, on-campus residence halls. Halls also feature an International Living Learning Community, which pairs domestic students with international students.

THE WOODS AT MILLIKIN APARTMENTS

Most upperclass students live in The Woods at Millikin Apartments on campus, a luxury-style apartment complex featuring four private bedrooms, full kitchen with microwave, washer/dryer, private deck or patio, and modern furnishings. "The Woods" also offers a pool, fitness center, computer lab, and gated community.

GREEK HOUSING

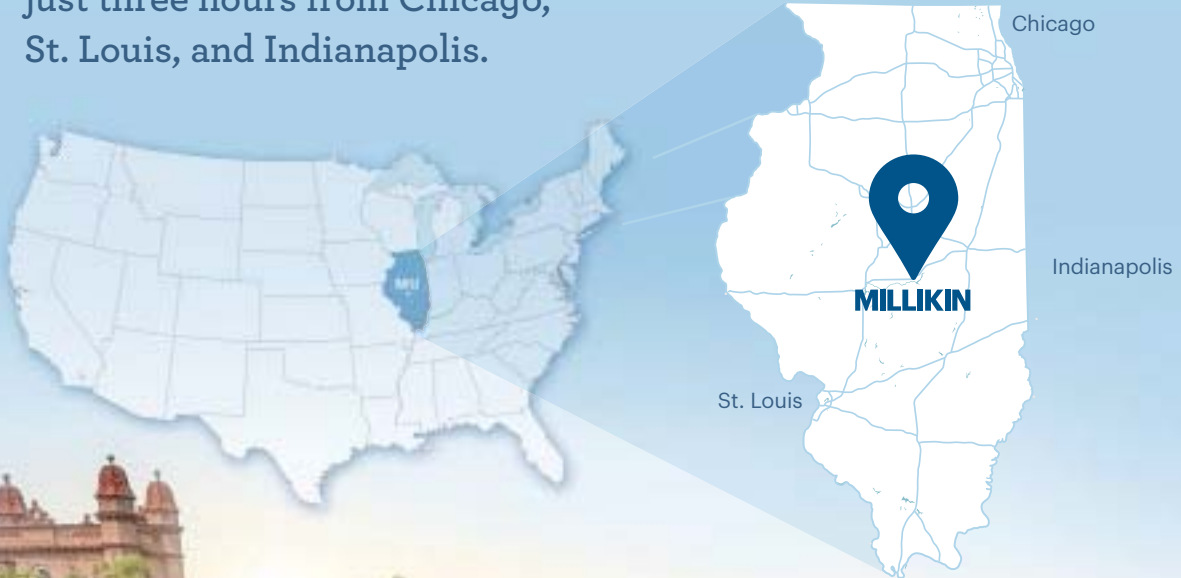
Sophomores, juniors, and seniors can choose to live in Greek Housing located near campus. Going Greek is a great way to focus on scholarship, service, and leadership while networking and creating life-long friendships.

DINING OPTIONS

Millikin's Dining Hall provides a wide variety of menu choices for all meals. Our chef is more than happy to accommodate special dietary requests. Additional campus eateries include specialty coffee and sandwich shops.



Positioned in the heart of the Midwest,
Millikin is located in Decatur, Illinois,
just three hours from Chicago,
St. Louis, and Indianapolis.



*Check out our online
virtual campus tour.*

millikin.edu/tour



MILLIKIN
UNIVERSITY®

Interested partners should contact **Carmen Aravena, Director of International Recruitment.**

online: www.millikin.edu/international **email:** international@millikin.edu **phone:** 00+1+217.424.6340